



## Color i<sup>TM</sup> QC

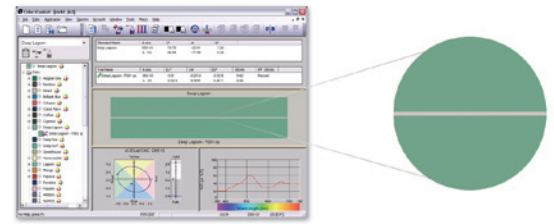
### Color Quality Control Software

This job-oriented software solution removes the guesswork from evaluating colors. Its easy adaptability allows analysis of lab dips, production samples, finished goods — any type of color control option — at a user-specified rate that accommodates each operation's work flow. Available in a choice of three levels for specific industry and color communication requirements.

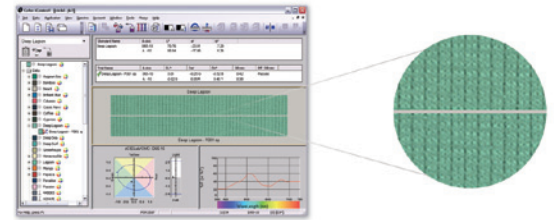


# Color iQC Advantages

- **Document Based Architecture - eJobs.** A method of accumulating, storing, and retrieving job data in a single folder or container that simplifies task management and color communication
- **Configurability.** Desktops can be created for specific user requirements and software levels, improving efficiency and making it easy to adapt to unique requirements
- **Connectivity.** A remote output feature allows the user to tailor and format any color data and to seamlessly share this data with color partners
- **Data Management.** An integrated account management system enhances organization and data protection
- **Traceability.** Every measurement, colorant, and collection is created with a GUID that identifies the object for its entire life
- **NetProfiler® Enabled.** An option that enables all spectrophotometers to measure consistently from a single remote location



Before texturing



After texturing

Color iQC features on-screen color with texturing to provide an precise color simulation before presenting a finished color selection to a customer.

## Specifications

Color Spaces	Observers	Illuminants	Color Differences	Pass / Fail	Industry-Standard Indices	Additional Features	Quality Control	Color iQC	
								Basic	Professional
CIE L*a*b*, CIE L*C*h*, Hunter Lab, CIE (XYZxy)	2 degree, 10 degree	D50, D55, D65, D75, F2, F7, F11, C, A, Horizon (GretagMacbeth), TL84, Ultralume 3000	FMCII, CIE DL*, Da*, Db*, CIE DL*, DC*, DH*, Hunter DL, Da, Db	All Attributes of CIELab, CIELch or HunterLab, CMC (l:c), CIE2000 (l:c:h)	Whiteness [ASTM E313, CIE, GANZ, Berger, Stensby, Taube, Tappi] Yellowness [ASTM E313, D1925], Opacity [Contrast Ratio, Tappi] Strength [SWL, Summed, Weighted Sum], Haze, Munsell Notation Orange Juice, Gloss [ASTM E429, Gloss60] Grey Scale [ISO 105 Staining, Color Change] Metamerism, Color Constancy Index, APHA	User Defined Screen Layouts Interactive Plots and Graphs Job Files Multiple Levels of Password Protection Data Tagging and Tracking Remote Output File Formats e-Submit Multiple Tolerancing Methods [User, Statistical, CMC, Historical] NetProfiler Enabled APHA	Job Driven Workflows Intelligent Customization Connectivity: Import/Export Capabilities Data Management Online Training NetProfiler Enabled Traceability / Automatic Associations Textured On-Screen Color and Appearance Image Capture / Association Dynamic Image Viewer Automatic [Intelligent] Tolerancing Networkable Database Design System Links using CxF User Defined Procedures Visual Representation of Tolerances Interactive Plots and Graphs Remote File Output Integrated e-Submit and Tagging Context Sensitive Help Password Protect Key Functions Dynamic Database Viewer / User Defined Hierarchy Palette Programs, Color Programs, Vendor Management eMail / FTP Support for Managin Submissions Cross Trail Color Differences	Limited	

## X-Rite: Your source for accurate color. On time. Every time.

X-Rite is a world leader in providing global color control solutions for manufacturing and quality management requirements.

We lead the industry in offering service options to ensure uninterrupted performance of all X-Rite products. Training and educational resources are available globally and online for both new and experienced users to optimize their color measurement capabilities.

Visit [xrite.com](http://xrite.com) for more information about X-Rite products. X-Rite customers worldwide may also call the Applications Support team at [CASupport@xrite.com](mailto:CASupport@xrite.com) or Customer Service at 800-248-9748.

[XRITE.COM](http://XRITE.COM) | [PANTONE.COM](http://PANTONE.COM)

© 2011, X-Rite, Incorporated. All rights reserved.

PANTONE® and other Pantone, Inc. trademarks are the property of Pantone, Inc.